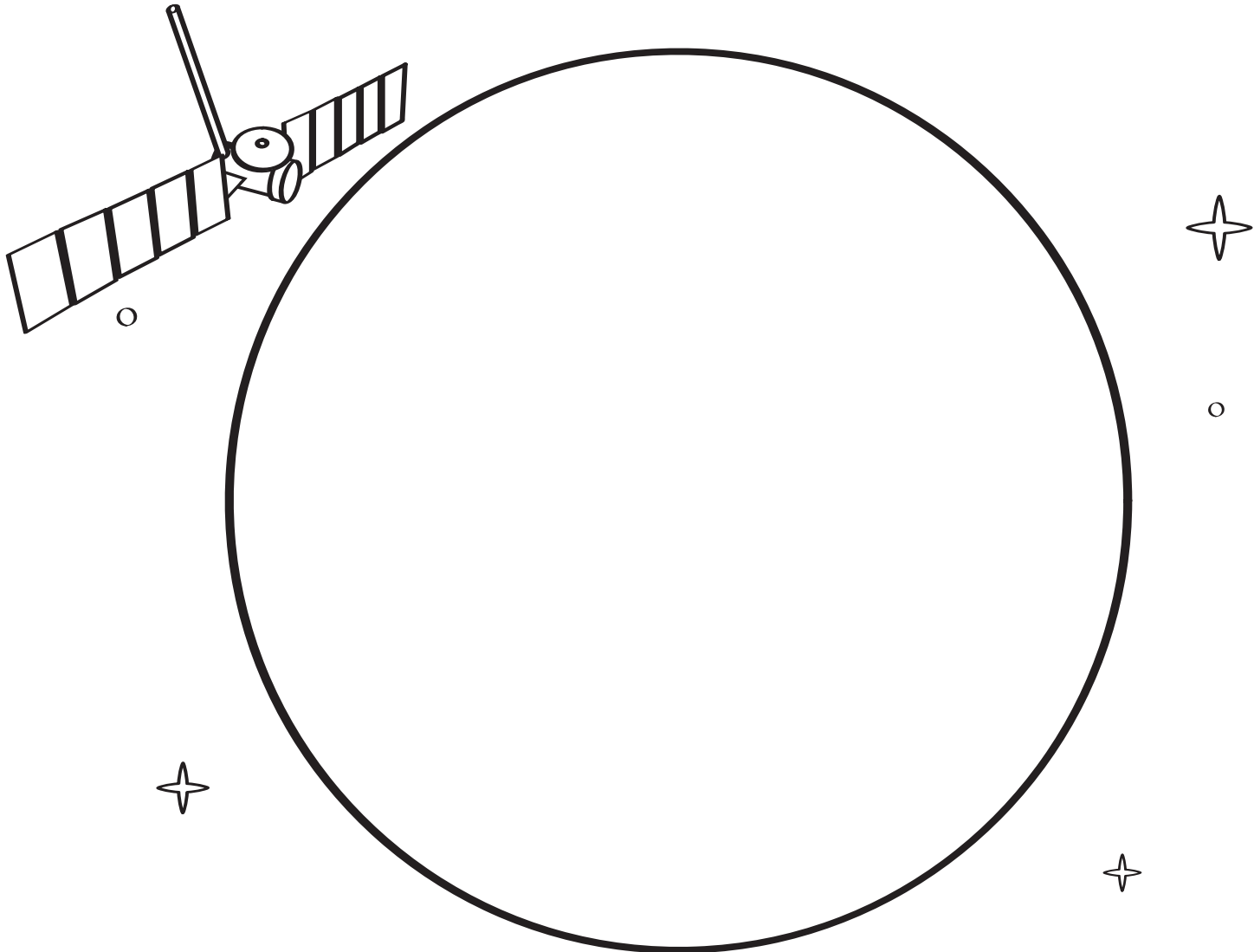


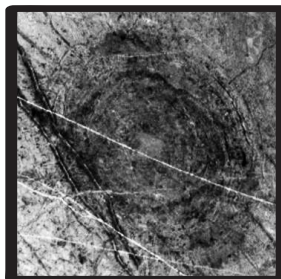


## Create your own colorful crayon Europa with textures!

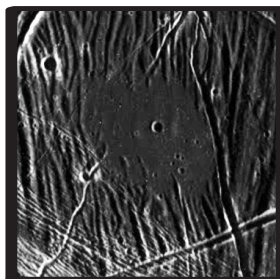
Europa is one of Jupiter's many moons. It has a liquid ocean with an icy crust on top. Europa's icy surface has lots of cool textures that give scientists hints as to what this moon is like. Use this circle to create your own Europa! Place some items with different textures under this sheet of paper and rub the side of a crayon to create textures like those found on Europa. When you're done, check out the examples of textures found on Europa below and match your texture creation with one that looks like the texture that could be on Europa. What material created that texture?



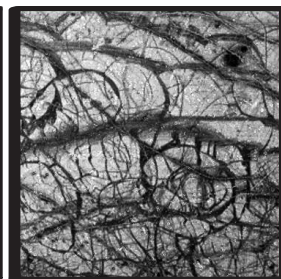
These textured sections are like icebergs; ice blocks have been moved around from their original positions.



This large circular texture is possibly the remnant of a large impact on Europa's icy surface.



This smooth feature looks like a "puddle" and could be a place where an ice slurry flooded the area. The crater was made by the impact of a meteor!



Wedge-shaped bands may represent places Europa's icy crust was pulled apart & new material has filled in the in-between area.



Ridges may represent places where material underneath Europa's icy shell was pushed up to the surface through cracks.